

# Prediction of first acute exacerbation using COPD subtypes identified by cluster analysis

This article was published in the following Dove Press journal:  
International Journal of Chronic Obstructive Pulmonary Disease

Hee-Young Yoon,<sup>1</sup>  
So Young Park,<sup>1</sup>  
Chang Hoon Lee,<sup>2</sup> Min-  
Kwang Byun,<sup>3</sup> Joo Ock Na,<sup>4</sup>  
Jae Seung Lee,<sup>5</sup> Won-  
Yeon Lee,<sup>6</sup> Kwang Ha Yoo,<sup>7</sup>  
Ki-Suck Jung,<sup>8</sup> Jin Hwa Lee<sup>1</sup>

<sup>1</sup>Division of Pulmonary and Critical Care Medicine, Department of Internal Medicine, College of Medicine, Ewha Womans Seoul Hospital, Ewha Womans University, Seoul, Korea; <sup>2</sup>Division of Pulmonary and Critical Care Medicine, Department of Internal Medicine, Seoul National University Hospital, Seoul, Korea; <sup>3</sup>Division of Pulmonary Medicine, Department of Internal Medicine, Gangnam Severance Hospital, Yonsei University College of Medicine, Yonsei University Health System, Seoul, Korea; <sup>4</sup>Division of Pulmonology, Department of Internal Medicine, Soonchunhyang University, College of Medicine, Cheonan, Korea; <sup>5</sup>Department of Pulmonary and Critical Care Medicine, Asan Medical Centre, University of Ulsan College of Medicine, Seoul, Korea; <sup>6</sup>Department of Internal Medicine, Wonju Christian Hospital, Yonsei University Wonju College of Medicine, Wonju, Korea; <sup>7</sup>Department of Internal Medicine, Konkuk University College of Medicine, Seoul, Korea; <sup>8</sup>Division of Pulmonary, Allergy and Critical Care Medicine, Department of Internal Medicine, Hallym University Medical Center, Hallym University College of Medicine, Anyang, Korea

Correspondence: Jin Hwa Lee  
Division of Pulmonary and Critical Care Medicine, Department of Internal Medicine, College of Medicine, Ewha Womans University, 260 Gonghang-daero Gangseo-gu, Seoul 07804, Korea  
Tel +8 226 986 1631  
Email jinhwalee@ewha.ac.kr

**Purpose:** In patients with COPD, acute exacerbation (AE) is not only an important determinant of prognosis, but also an important factor in choosing therapeutic agents. In this study, we evaluated the usefulness of COPD subtypes identified through cluster analysis to predict the first AE.

**Patients and methods:** Among COPD patients in the Korea COPD Subgroup Study (KOCOSS) cohort, 1,195 who had follow-up data for AE were included in our study. We selected seven variables for cluster analysis – age, body mass index, smoking status, history of asthma, COPD assessment test (CAT) score, post-bronchodilator (BD) FEV<sub>1</sub> % predicted, and diffusing capacity of carbon monoxide % predicted.

**Results:** K-means clustering identified four clusters for COPD that we named putative asthma-COPD overlap (ACO), mild COPD, moderate COPD, and severe COPD subtypes. The ACO group (n=196) showed the second-best post-BD FEV<sub>1</sub> (75.5% vs 80.9% [mild COPD, n=313] vs 52.4% [moderate COPD, n=345] vs 46.7% [severe COPD, n=341] predicted), the longest 6-min walking distance (424 m vs 405 m vs 389 m vs 365 m), and the lowest CAT score (12.2 vs 13.7 vs 15.6 vs 17.5) among the four groups. ACO group had greater risk for first AE compared to the mild COPD group (HR, 1.683; 95% CI, 1.175–2.410). The moderate COPD and severe COPD group HR values were 1.587 (95% CI, 1.145–2.200) and 1.664 (95% CI, 1.203–2.302), respectively. In addition, St. George's Respiratory Questionnaire score (HR: 1.019; 95% CI, 1.014–1.024) and gastroesophageal reflux disease were independent factors associated with the first AE (HR: 1.535; 95% CI, 1.116–2.112).

**Conclusion:** Our cluster analysis revealed an exacerbator subtype of COPD independent of FEV<sub>1</sub>. Since these patients are susceptible to AE, a more aggressive treatment strategy is needed in these patients.

**Keywords:** clustering, prognosis, phenotype, asthma-COPD overlap, exacerbation, comorbidity

## Introduction

COPD is a heterogeneous disease characterized by progressive respiratory impairment and not fully reversible airway obstruction.<sup>1</sup> Because COPD not only shows diverse clinical manifestations and prognosis, but also requires different treatments, multiple phenotypes are proposed to compliment this heterogeneity.<sup>2–4</sup> Along with the classical phenotypes of chronic bronchitis and emphysema,<sup>5</sup> several additional variables related to the prognosis of COPD, including severity of airway limitation, demographics, radiographic findings, comorbidities and occurrence of acute exacerbation (AE) are proposed for categorization.<sup>2–4,6</sup>

Acute exacerbation of COPD (AE-COPD) is defined as deterioration of respiratory symptoms beyond normal day-to-day variations, resulting in changes of medication.<sup>7</sup>

An AE-COPD occurs on average about 0.34–3.00 times per person per year.<sup>8</sup> Because AE-COPD is directly linked to high mortality and significant economic burden,<sup>9,10</sup> its prediction is important. The most reliable predictor of AE-COPD is history of AE, and there is a specific patient population with intrinsic susceptibility to AE due to exposure to triggers.<sup>11</sup> Patients who experience more than two moderate to severe AE incidents per year are called frequent exacerbators and have distinct characteristics including severely impaired FEV<sub>1</sub>, dyspnea score, and physiological score with worse outcomes.<sup>12</sup> However, not much is known about the specific COPD subtype associated with AE occurrence based on the various clinical variables related to the occurrence of AE.

Cluster analysis is a method of data mining by defining data groups (clusters) based on measured characteristics to identify representation in specific groups.<sup>13</sup> Because subtypes of COPD have commonly airflow limitations but different symptoms, demographics, and prognoses, cluster analysis is used to identify specific phenotypes.<sup>14</sup> The aim of this study was to identify specific COPD subtypes through cluster analysis of variables known to be associated with COPD prognosis and to evaluate the usefulness of these subtypes to predict the first AE in COPD.

## Materials and methods

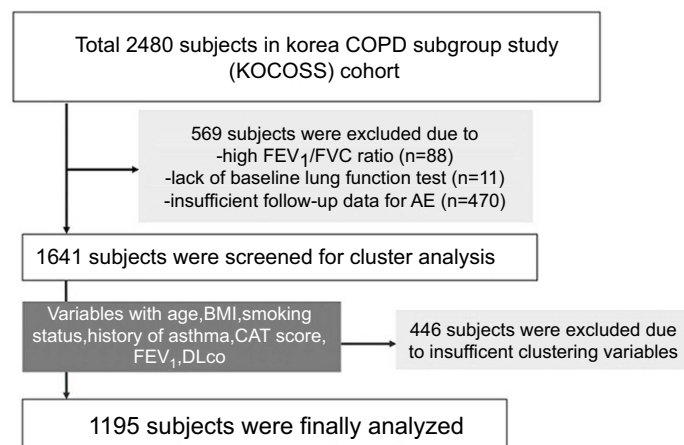
### Study population

Among the total 2,480 subjects registered in the Korea COPD Subgroup Study (KOCOSS) cohort recruited from 45 study centers between December 2011 and October 2014,<sup>15</sup> 1,641 were initially screened for our study. We excluded 569 subjects

that lacked airway limitation (measured FEV<sub>1</sub>/FVC  $\geq$ 0.7), baseline pulmonary function test data, and follow-up data for the occurrence of AE (Figure 1). Finally, 1,195 subjects with seven clustering variables of age, body mass index (BMI), smoking status, history of asthma, COPD assessment test (CAT) score, post-bronchodilator (BD) FEV<sub>1</sub>% predicted, and diffusing capacity for carbon monoxide (DLco) % predicted were enrolled. We divided the subjects into four groups based on clustering analysis and named them according to the characteristics of the group as follows: asthma-COPD overlap (ACO), mild COPD, moderate COPD, and severe COPD. This study was approved by the Institutional Review Board of Ewha Womans University Hospital (ECT 2012–04-006–001) and all patients provided written informed consent before cohort entry.

### Study design and outcomes

Data on demographics, lung function, 6MWD test, CAT score,<sup>16</sup> COPD-specific version of St. George's Respiratory Questionnaire (SGRQ) score,<sup>17</sup> laboratory findings, comorbidities, and medication were retrospectively reviewed from electronic medical records in the KOCOSS database. All medical data were obtained from case-report forms evaluated by physicians or trained nurses with 6-month interval patient examinations. Spirometry and 6MWD tests were performed according to standard American Thoracic Society guidelines with modification.<sup>18,19</sup> The occurrence of AE, defined as respiratory deterioration requiring antibiotics or systemic corticosteroids with or without inhaler change, was also investigated at 6-month intervals by pulmonologists.



**Figure 1** Enrollment of patients.

**Abbreviations:** BMI, body mass index; DLco, diffusing capacity of the lung for carbon monoxide; CAT, COPD assessment test.

## Statistical analysis

Cluster analysis was performed using a K-means cluster analysis with the seven variables considered to contribute to specific COPD phenotypes.<sup>20</sup> Clinical characteristics were compared according to the group after clustering. Continuous and categorical variables are expressed as mean±SD and number (percentage), respectively. One-way ANOVA or Kruskal–Wallis test was used for analyzing continuous variables. The Pearson chi-square test or Fisher's exact test was used for analyzing categorical variables. The Kaplan–Meier method was used to express AE-free probability, and the differences between COPD groups were assessed using the log-rank test. The risk factors for AE including COPD subtypes were reported as HR with 95% confidence interval (CI) from the Cox's proportional-hazard model using time from cohort entry to first AE. Variables with a *p*-value <0.1 from univariate analysis were candidates for multivariate analysis. A *p*-value <0.05 (two-tailed) was regarded as statistically significant. All statistical analyses were performed using SPSS version 24.0 (SPSS Inc., Chicago, IL, USA).

## Results

### Comparison of baseline demographics

Of a total of 1,195 subjects (mean age: 64.8 years, male: 92.5%), 196 (16.4%), 313 (26.2%), 345 (28.9%), and 341 (28.5%) were classified in the ACO, mild, moderate, and severe COPD groups, respectively, mostly based on the degree of airflow limitation. Among the four groups, the ACO group had the highest proportion of male patients (95.9% [ACO] vs 88.2% [mild] vs 94.2% [moderate] vs 93.2% [severe], *p*=0.004), the highest mean BMI (23.9 vs 23.7 vs 23.2 vs 21.8 kg/m<sup>2</sup>, *p*<0.001), and the second oldest mean age (65.2 vs 67.7 vs 63.5 vs 63.5 years, *p*<0.001), while pack-years of smoking in the ACO group was the lowest (38.4 vs 43.3 vs 43.3 vs 47.5 pack-years, *p*=0.001; Table 1).

In lung function comparison, the ACO group showed the best DLco (110.5 vs 71.6 vs 81.0 vs 49.8% predicted, *p*<0.001) and 6MWD (423.9 vs 405.2 vs 389.2 vs 364.7 m, *p*<0.001) values and the second-best values of FEV<sub>1</sub> (75.5 vs 80.9 vs 52.4 vs 46.6% predicted, *p*<0.001), FVC (91.2 vs 95.5 vs 82.1 vs 78.8% predicted, *p*<0.001), and FEV<sub>1</sub>/FVC (57.7 vs 58.4 vs 46.2 vs 43.0, *p*<0.001). Although the differences were very small, the ACO group also revealed the highest values of initial (96.5% vs 96.1% vs 96.3% vs 95.3%, *p*<0.003) and lowest SpO<sub>2</sub> levels (95.6% vs 94.7% vs 94.5% vs 92.2%, *p*<0.001).

In laboratory findings, total white blood cell (WBC) count (7.2 vs 7.3 vs 7.8 vs 7.9 10<sup>3</sup>/mm<sup>3</sup>, *p*=0.001) and C-reactive protein (1.5 vs 5.4 vs 4.3 vs 4.7 mg/dL, *p*=0.002) levels were lowest in the ACO group among the four COPD subtypes.

### Comorbidities and treatment status

Among the four COPD groups, the ACO group showed the highest rate of gastroesophageal reflux disease (GERD, 16.3% [ACO] vs 9.0% [mild] vs 10.8% [moderate] vs 6.7% [severe], *p*=0.004) and the second highest rate of asthma (34.7% vs 27.2% vs 37.7% vs 34.3%, *p*=0.035; Table 2). Hyperlipidemia (13.3% vs 17.0% vs 10.4% vs 9.3%, *p*=0.014), myocardial infarction (5.6% vs 7.1% vs 5.5% vs 2.3%, *p*=0.043), and atopic dermatitis (4.6% vs 4.8% vs 3.8% vs 2.9%) were the highest in the mild group, followed by the ACO group.

Patients who were prescribed long-acting muscarinic antagonist (LAMA; 57.1% vs 58.8% vs 72.9% vs 77.3%, *p*<0.001) or inhaled corticosteroid (ICS) plus long-acting beta2 agonist (LABA; 29.6% vs 21.1% vs 49.6% vs 46.1%, *p*<0.001) were more frequent in the moderate and severe COPD groups compared to the ACO and mild COPD groups (Table 3). The rates of theophylline (33.1% vs 27.8% vs 36.6% vs 33.1%, *p*=0.015) and roflumilast (0.6% vs 0.4% vs 5.9% vs 0.6%, *p*<0.001) treatments were highest in the moderate COPD group and similar in the ACO and severe COPD groups.

### Occurrence of AE

The median follow-up period was 18 months (interquartile range: 6 to 36 months), and the ACO group had the longest follow-up duration (Table 4). Total number of AEs was highest in the moderate COPD group (0.79 [ACO] vs 0.36 [mild] vs 0.90 [moderate] vs 0.86 [severe], *p*<0.001), while the mean annual frequency of AE (0.29 vs 0.18 vs 0.32 vs 0.39, *p*<0.001) was highest in the severe COPD group. Of total patients, 424 (35.5%) experienced AE during the follow-up period. The median time for AE occurrence in the ACO group was 42 months (95% CI, 28.5–55.5 months), which was similar to that of the moderate COPD group (42.0 months; 95% CI, 28.3–55.7 months; Figure 2-A). The severe COPD group showed the shortest median time for AE (30.0 months; 95% CI, 23.5–36.5 months) among the four COPD groups.

### Risk factors for AE

In univariate analysis, COPD subtype, BMI, lung function test (FEV<sub>1</sub>, FVC, FEV<sub>1</sub>/FVC), lowest SpO<sub>2</sub>, CAT

**Table 1** Comparison of baseline characteristics according to the clustering groups

Characteristics	ACO	Mild	Moderate	Severe	p-value
No	196	313	345	341	
Age, years	65.2 (8.8)	67.7 (7.9)	63.5 (8.2)	63.5 (8.7)	<0.001
Male	188 (95.9)	276 (88.2)	325 (94.2)	313 (93.2)	0.004
BMI, kg/m <sup>2</sup>	23.9±3.3	23.7±2.9	23.2±3.0	21.8±3.2	<0.001
Smoking status					0.852
Current	49 (25.0)	84 (26.8)	93 (27.0)	87 (25.5)	
Former	126 (64.3)	195 (62.3)	214 (62.0)	226 (66.3)	
Never	21 (10.7)	34 (10.9)	38 (11.0)	28 (8.2)	
Smoking amount, pyrs	38.4±22.5	43.3±21.8	43.3±25.7	47.5±26.1	0.001
Lung functions test					
FEV <sub>1</sub> , % predicted	75.5±16.2	80.9±12.8	52.4±10.1	46.6±12.5	<0.001
FVC, % predicted	91.2±16.7	95.5±13.8	82.1±17.1	78.8±18.0	<0.001
FEV <sub>1</sub> /FVC, %	57.7±8.7	58.4±7.5	46.2±10.7	43.0±10.6	<0.001
DLco, % predicted	110.5±16.9	71.6±12.3	81.0±9.7	49.8±11.4	<0.001
TLC, % predicted	107.4±17.6	104.0±21.5	112.3±25.7	109.5±25.9	<0.001
6MWD, meters	423.9±105.2	405.2±107.8	389.2±121.6	364.7±104.8	<0.001
Initial SpO <sub>2</sub> , %	96.5±1.9	96.1±2.2	96.3±2.4	95.3±6.4	0.003
Lowest SpO <sub>2</sub> , %	95.6±2.6	94.7±3.4	94.5±4.1	92.2±8.2	<0.001
CAT score	12.2±6.8	13.7±8.1	15.6±7.7	17.5±8.1	<0.001
SGRQ	35.1±17.9	38.7±19.4	46.6±20.8	49.4±20.2	<0.001
Laboratory findings					
WBC count, 10 <sup>3</sup> /mm <sup>3</sup>	7.2±2.4	7.3±1.9	7.8±2.4	7.9±2.8	0.001
Eosinophil, %	3.0±2.5	3.4±2.8	3.4±3.7	3.3±3.9	0.059
CRP, mg/dL	1.5±2.9	2.0±5.4	4.3±18.6	4.7±11.4	0.002
ESR, mm/h	14.0±13.3	16.5±16.4	17.3±16.4	19.5±18.2	0.061

**Note:** Data are presented as mean±SD or number (%).

**Abbreviations:** BMI, body mass index; pyrs, pack-years; ; DLco, diffusing capacity of the lung for carbon monoxide; TLC, total lung capacity; SpO<sub>2</sub>, oxygen saturation; CAT, COPD assessment test; SGRQ, St George's Respiratory Questionnaire; WBC, white blood cell; CRP, C-reactive protein; ESR, erythrocyte sedimentation rate.

**Table 2** Comparison of comorbidities according to the clustering groups

Characteristics	ACO	Mild	Moderate	Severe	p-value
No	196	313	345	341	
Hypertension	87 (44.4)	124 (39.6)	136 (39.4)	126 (37.0)	0.410
Asthma	68 (34.7)	85 (27.2)	130 (37.7)	117 (34.3)	0.035
Diabetes mellitus	38 (19.4)	62 (19.9)	59 (17.1)	44 (12.9)	0.083
GERD	32 (16.3)	28 (9.0)	37 (10.8)	23 (6.7)	0.004
Allergic rhinitis	29 (14.9)	33 (10.6)	35 (10.3)	38 (11.4)	0.393
Hyperlipidemia	26 (13.3)	53 (17.0)	35 (10.4)	32 (9.3)	0.014
Myocardial infarction	11 (5.6)	22 (7.1)	19 (5.5)	8 (2.3)	0.043
Osteoporosis	10 (5.1)	17 (5.4)	22 (6.4)	11 (3.2)	0.289
Atopic dermatitis	9 (4.6)	15 (4.8)	8 (2.4)	1 (0.4)	<0.001
Heart failure	6 (3.1)	8 (2.6)	13 (3.8)	10 (2.9)	0.840
Peripheral vascular disease	4 (2.0)	5 (1.6)	6 (1.7)	5 (1.5)	0.958
Thyroid disease	2 (1.0)	10 (3.2)	7 (2.1)	11 (3.2)	0.331
IBD	1 (0.5)	3 (1.0)	0 (0.0)	5 (1.5)	0.107

**Note:** Data are presented as number (%).

**Abbreviations:** GERD, gastroesophageal reflux disease; IBD, inflammatory bowel disease.

**Table 3** Comparison of treatment use according to the clustering groups

Characteristics	ACO	Mild	Moderate	Severe	p-value
No	196	313	345	341	
LAMA	97 (57.1)	157 (58.8)	229 (72.9)	242 (77.3)	<0.001
ICS plus LABA	58 (29.6)	66 (21.1)	169 (49.6)	159 (46.1)	<0.001
Theophylline	53 (33.1)	68 (27.8)	107 (36.6)	53 (33.1)	0.015
Oral beta-2 agonist	20 (12.4)	14 (5.8)	24 (8.3)	20 (12.4)	0.134
Roflumilast	1 (0.6)	1 (0.4)	17 (5.9)	1 (0.6)	<0.001

**Note:** Data are presented as number (%).

**Abbreviations:** LAMA, long-acting muscarinic antagonist; ICS, inhaled corticosteroid; LABA, long-acting beta2 agonist.

**Table 4** Number of acute exacerbation of COPD according to the clustering groups

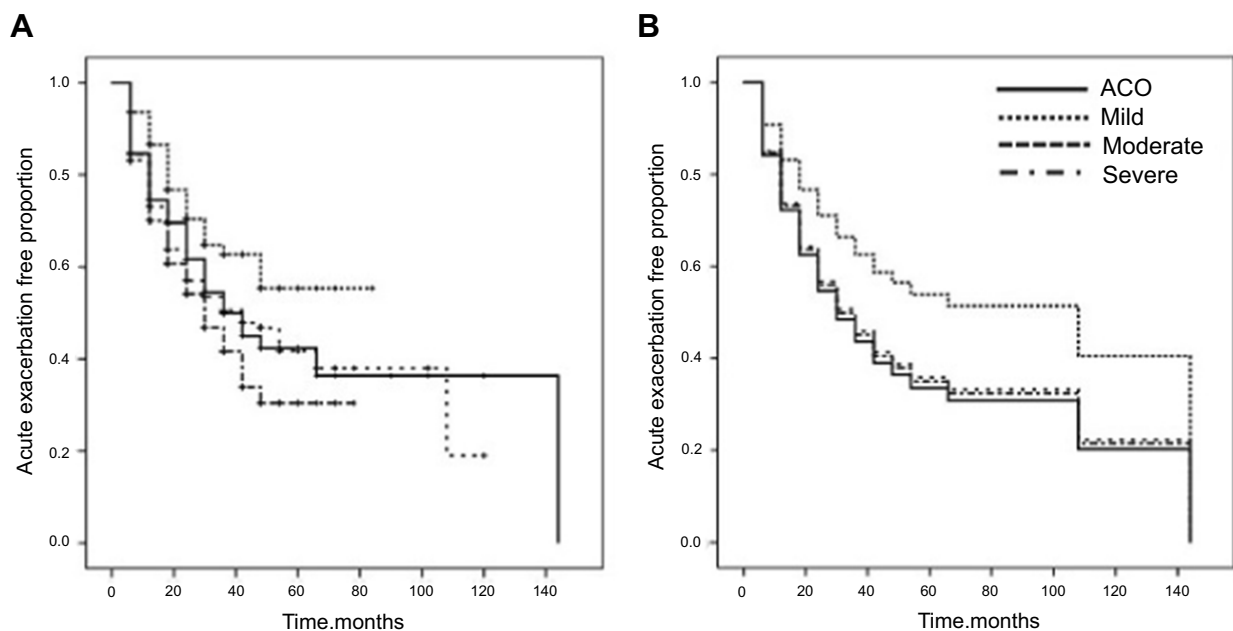
Characteristics	ACO	Mild	Moderate	Severe	p-value
No	196	313	345	341	
Follow-up duration, months	24 (12–36)	12 (6–24)	18 (6–30)	18 (12–36)	<0.001
Total number of AE	0.79±1.42	0.36±1.01	0.90±1.58	0.86±1.37	<0.001
Number of AE per year	0.29±0.49	0.18±0.51	0.32±0.49	0.39±0.58	<0.001

**Note:** Data are presented as mean±SD or median (interquartile range).

**Abbreviations:** AE, acute exacerbation; mo, month.

score, SGRQ, and total WBC count were significantly associated with the first AE occurrence (Table 5). On multivariate analysis using non-clustered variables with a  $p$ -value <0.1, COPD subtype, SGRQ (HR, 1.019; 95% CI, 1.014–1.024;  $p$ <0.001), and GERD comorbidity (HR, 1.535; 95% CI, 1.116–2.112;  $p$ =0.008) were independent factors associated with the first AE.

According to the multivariate Cox proportional hazard model, the HR for the first AE was significantly higher in the ACO (HR, 1.683; 95% CI 1.175–2.410;  $p$ =0.005), moderate (HR, 1.587; 95% CI, 1.145–2.200;  $p$ =0.006), and severe (HR, 1.664; 95% CI, 1.203–2.302;  $p$ =0.002) groups compared with the mild group (Figure 2B).



**Figure 2** Survival curve for acute exacerbation. (A) Kaplan–Meier curves showed the proportion of acute exacerbation free patients for four COPD subgroups. (B) Multivariate Cox survival curves showed the proportion of acute exacerbation free patients for four COPD subgroups.



**Table 5** Univariate and multivariate Cox analysis of risk factors associated with AE occurrence

Characteristics	Univariate analysis			Multivariate analysis		
	HR	95% CI	p-value	HR	95% CI	p-value
Subgroup						
Mild	1.000			1.000		
ACO	1.605	1.146–2.246	0.006	1.683	1.175–2.410	0.005
Moderate	1.989	1.484–2.668	<0.001	1.587	1.145–2.200	0.006
Severe	1.691	1.256–2.277	0.001	1.664	1.203–2.302	0.002
Age, years	0.994	0.984–1.004	0.217			
Male	0.881	0.666–1.166	0.376			
BMI, kg/m <sup>2</sup>	0.976	0.952–1.000	0.047			
Smoking status						
Current	1.000					
Former	0.978	0.812–1.179	0.818			
Never	1.034	0.782–1.368	0.812			
Smoking amount, pyrs	1.002	0.999–1.005	0.279			
FEV <sub>1</sub> , % predicted	0.984	0.980–0.988	<0.001			
FVC, % predicted	0.994	0.990–0.998	0.004	1.001	0.995–1.007	0.691
FEV <sub>1</sub> /FVC, %	0.976	0.970–0.983	<0.001			
DLco, % predicted	0.999	0.995–1.003	0.661			
TLC, % predicted	1.002	0.998–1.005	0.360			
6MWD, meters	0.999	0.999–1.000	0.093	1.000	0.999–1.001	0.810
Initial SpO <sub>2</sub> , %	0.997	0.968–1.027	0.852			
Lowest SpO <sub>2</sub> , %	0.984	0.969–0.999	0.032	0.991	0.968–1.015	0.471
CAT score	1.041	1.030–1.051	<0.001			
SGRQ	1.018	1.014–1.022	<0.001	1.019	1.014–1.024	<0.001
Asthma	0.924	0.783–1.089	0.345			
GERD	1.279	1.000–1.637	0.050	1.535	1.116–2.112	0.008
WBC count, 10 <sup>3</sup> /mm <sup>3</sup>	1.066	1.034–1.099	<0.001	1.031	0.987–1.077	0.166
CRP, mg/dL	0.997	0.983–1.011	0.677			
ESR, mm/h	1.001	0.994–1.008	0.871			

**Abbreviations:** BMI, body mass index; DLco, diffusing capacity of the lung for carbon monoxide; TLC, total lung capacity; SpO<sub>2</sub>, oxygen saturation; CAT, COPD assessment test; SGRQ, St George's Respiratory Questionnaire; GERD, gastroesophageal reflux disease; WBC, white blood cell; CRP, C-reactive protein; ESR, erythrocyte sedimentation rate.

## Discussion

Using age, BMI, smoking status, history of asthma, CAT score, FEV<sub>1</sub>, and DLco variables in clustering, we divided patients into the following four subtypes: ACO, mild, moderate, and severe COPD. The ACO group had the second-best FEV<sub>1</sub> and FVC values and the highest BMI and DLco. The ACO group also showed the lowest CAT and SGRQ scores and higher rates of asthma and GERD as comorbidities. The COPD subtypes were an independent predictor for first occurrence of AE with SGRQ and GERD, and our ACO group showed a significant 76.6% increase in the rate of AE, with 65.9% and 69.6% increases in the moderate and severe groups, respectively, compared with the mild group.

Our study demonstrated that phenotype is linked to the occurrence of AE through clustering analysis using seven clinical variables without the history of AE. Previous studies identified the frequent exacerbator phenotype based on the history of AE, because a history of AE is the most powerful predictor of AE.<sup>11,12,21</sup> The Exacerbations of COPD Patients (EXACO) study revealed the frequent exacerbator phenotype to have more impaired airflow limitation, respiratory symptoms, and daily activity limitations according to four-year follow-up of AE frequency.<sup>12</sup> In the Evaluation of COPD Longitudinally to Identify Predictive Surrogate Endpoints (ECLIPSE) study, frequent exacerbators also showed rapid decline in FEV<sub>1</sub>, the rate of GERD or heartburn symptoms, and elevated WBC counts compared with non-

frequent exacerbators.<sup>11</sup> However, the subtype related to the occurrence of AE based on clustering in our study showed mild airway limitation and respiratory symptoms and relatively high rates of asthma and GERD as comorbidities. These results suggest that, in addition to other factors known to be associated with AE, the ACO subtype of COPD seems to have a relationship with AE occurrence.

The reason we named one of the four clusters as a putative “ACO” group in this study is as follows. Diagnosis of ACO requires partial but not complete reversibility of airway limitation (post-BD FEV<sub>1</sub><80% predicted).<sup>22</sup> Non-impairment of DLco with post-BD FEV<sub>1</sub><80% predicted in the putative ACO group could be evidence for non-existing emphysema. Among the four groups, the second-most common underlying diseases, asthma and atopic dermatitis, also supported the possibility of ACO.<sup>23</sup> In clinical practice, the diagnosis of ACO, which indicates coexisting COPD and asthma, is challenging because the standard validated diagnostic criteria are still controversial.<sup>24</sup> ACO patients are generally reported to have more frequent AE compared with pure COPD or asthma.<sup>25–28</sup> However, ACO patients in a previous study showed relatively severe airway limitation with impaired baseline post-BD FEV<sub>1</sub>, which is a strong risk factor for AE.<sup>11</sup> In our study, the putative ACO subtype had moderate airway limitation but a high rate of AE-COPD. In addition, our ACO group showed different characteristics from the ACO groups as defined in other studies, showing a low level of inflammatory markers and modest airway limitation and preserved functional capacity.<sup>27–29</sup> In addition, better dyspnea scale score and functional parameters in the ACO group are also unique to our study compared with those in other studies. These results suggest that other factors are related to the occurrence of AE in addition to the conventional COPD severity indicators.

According to our study, the putative ACO group had the highest proportion of patients with GERD but lower proportions of patients who received LAMA and ICS plus LABA treatment due to mild airway limitation. The high AE occurrence rate in the ACO group might be attributed to the high presence of GERD despite relatively mild impairment of lung function. Several studies have reported that GERD is an independent risk factor for AE-COPD.<sup>11,30–35</sup> In the ECLIPSE study, AE-COPD was linked to the history of GERD or heartburn with prior history of AE.<sup>11</sup> Meta-analysis based on five prospective and retrospective COPD studies also demonstrated that the risk of AE-COPD was significantly increased in patients with GERD (relative risk: 7.57; 95% CI,

3.57–14.94).<sup>30</sup> Martinez et al demonstrated a significant relationship between the frequent exacerbator phenotype ( $\geq 2$  COPD-AE per year) and GERD (odds ratio, 1.40;  $p=0.006$ ).<sup>35</sup> However, since most COPD patients with GERD rarely complain of either reflux symptoms (eg, heartburn, regurgitation) or respiratory symptoms (eg, cough, dyspnea),<sup>36</sup> there is a possibility that GERD diagnosis often is overlooked. Silent aspiration of gastric contents due to GERD might lead to frequent AE-COPD by increasing bacterial burden in the respiratory tract.<sup>37</sup> Sasaki et al showed that anti-reflux treatment significantly reduced the occurrence of AE in COPD patients without reflux symptoms,<sup>38</sup> indicating that management of GERD could be beneficial for preventing AE-COPD.

Another reason for the high incidence of AE in our putative ACO group might be the low administration of ICS plus LABA, despite the relatively high proportion of asthma. Current Global Initiative for Asthma management guidelines recommend regular use of low-dose ICS as initial treatment for symptomatic asthma patients. Furthermore, if the predominance of asthma and COPD in ACO patients is difficult to determine, first-line treatment should include ICS, followed by addition of other inhalers if needed.<sup>39</sup> In our study, ICS usage in the ACO group was low, which might be due to mild impairment of lung function, good exercise capacity, and low symptom score. While the ACO group in our study was an independent factor for first AE occurrence, the annual incidence of AE was highest in the severe group. Although we did not collect data on changes in medication during follow-up, these findings suggest that the ACO group might have experienced inhibition of further development of AE by appropriate treatment such as ICS after occurrence of the first AE event.

The limitations of our study are as follows. First, AE in our study was not based on strict criteria since this was a retrospective cohort study. The accurate time, severity, and clinical course of AE were not evaluated. However, the occurrence of AE was carefully assessed by experienced pulmonologists, and all patients were evaluated at 6-month intervals. Second, the relatively short follow-up duration might result in underestimated AE occurrence; however, since the annual exacerbation frequency ranged from two to three times per year depending on the severity of COPD,<sup>40</sup> the median 18-month follow-up duration might be sufficient to assess the first development of AE. Lastly, subjects excluded due to insufficient follow-up data ( $n=470$ ) might have led to selection bias. It was not

possible to assume the cause of follow-up loss, but it might be another reason for underestimation of AE development.

## Conclusion

In conclusion, we identified the COPD subtypes susceptible to AE using cluster analysis with several clinical factors, including lung function. The ACO group had frequent AE-COPD despite good pulmonary function and exercise capacity and low dyspnea scale, which might be associated with GERD. Thus, subtypes susceptible to AE need more aggressive treatment strategies considering their comorbidities. Further studies should highlight the specific phenotype related to mortality or lung function decline in COPD patients.

## Acknowledgments

This research was supported by the National Research Foundation of Korea (NRF) grant funded by the Korean government (MSIT) (2010-0027945). The study was presented at the 2018 Annual Autumn Meeting of the Korean Academy of Tuberculosis and Respiratory Diseases in Seoul, South Korea, November 10, 2018. The poster's abstract was published in "Poster Abstracts" in the Korean Academy of Tuberculosis and Respiratory Diseases: <http://www.riss.kr/link?id=A105774412>.

## Disclosure

The authors report no conflicts of interest in this work.

## References

- Vogelmeier CF, Criner GJ, Martinez FJ, et al. Global strategy for the diagnosis, management, and prevention of chronic obstructive lung disease 2017 report. GOLD executive summary. *Am J Respir Crit Care Med*. 2017;195(5):557–582. doi:10.1164/rccm.201701-0150WS
- Han MK, Agusti A, Calverley PM, et al. Chronic obstructive pulmonary disease phenotypes. *Am J Respir Crit Care Med*. 2010;182(5):598–604. doi:10.1164/rccm.200912-1843CC
- Marsh SE, Travers J, Weatherall M, et al. Proportional classifications of COPD phenotypes. *Thorax*. 2008;63(9):761–767. doi:10.1136/thx.2007.089193
- Mirza S, Benzo R. Chronic obstructive pulmonary disease phenotypes: implications for care. *Mayo Clin Proc*. 2017;92(7):1104–1112. doi:10.1016/j.mayocp.2017.03.020
- American Thoracic Society. Standards for the diagnosis and care of patients with chronic obstructive pulmonary disease. American thoracic society. *Am J Respir Crit Care Med*. 1995;152(5 Pt 2):S77–121. doi:10.1164/ajrccm.152.1.7599836
- Kitaguchi Y, Fujimoto K, Kubo K, Honda T. Characteristics of COPD phenotypes classified according to the findings of HRCT. *Respir Med*. 2006;100(10):1742–1752. doi:10.1016/j.rmed.2006.02.003
- Rodriguez-Roisin R. Toward a consensus definition for COPD exacerbations. *Chest*. 2000;117(5 Suppl 2):398s–401s. doi:10.1378/chest.117.5\_suppl\_2.398s
- Seemungal TAR, Hurst JR, Wedzicha JA. Exacerbation rate, health status and mortality in COPD—a review of potential interventions. *Int J Chron Obstruct Pulmon Dis*. 2009;4:203–223.
- Toy EL, Gallagher KF, Stanley EL, Swensen AR, Duh MS. The economic impact of exacerbations of chronic obstructive pulmonary disease and exacerbation definition: a review. *Copd*. 2010;7(3):214–228. doi:10.3109/15412555.2010.481697
- Soler-Cataluña JJ, Martínez-García MÁ, Román Sánchez P, Salcedo E, Navarro M, Ochando R. Severe acute exacerbations and mortality in patients with chronic obstructive pulmonary disease. *Thorax*. 2005;60(11):925. doi:10.1136/thx.2005.040527
- Hurst JR, Vestbo J, Anzueto A, et al. Susceptibility to exacerbation in chronic obstructive pulmonary disease. *N Engl J Med*. 2010;363(12):1128–1138. doi:10.1056/NEJMoa0909883
- Le Rouzic O, Roche N, Cortot AB, et al. Defining the “frequent exacerbator” phenotype in COPD: a hypothesis-free approach. *Chest*. 2018;153(5):1106–1115. doi:10.1016/j.chest.2017.10.009
- McLachlan G. Cluster analysis and related techniques in medical research. *Stat Methods Med Res*. 1992;1(1):27–48. doi:10.1177/096228029200100103
- Weatherall M, Shirlcliffe P, Travers J, Beasley R. Use of cluster analysis to define COPD phenotypes. *Eur Respir J*. 2010;36(3):472–474. doi:10.1183/09031936.00035210
- Lee JY, Chon GR, Rhee CK, et al. Characteristics of patients with chronic obstructive pulmonary disease at the first visit to a pulmonary medical center in Korea: the Korea COPD subgroup study team cohort. *J Korean Med Sci*. 2016;31(4):553–560. doi:10.3346/jkms.2016.31.4.553
- Tsiligianni IG, van der Molen T, Moraitaki D, et al. Assessing health status in COPD. A head-to-head comparison between the COPD assessment test (CAT) and the clinical COPD questionnaire (CCQ). *BMC Pulm Med*. 2012;12(1):20. doi:10.1186/1471-2466-12-20
- Burge PS, Calverley P, Jones PW, Spencer S, Anderson JA, Maslen T. Randomised, double blind, placebo controlled study of fluticasone propionate in patients with moderate to severe chronic obstructive pulmonary disease: the ISOLDE trial. *Bmj*. 2000;320(7245):1297–1303. doi:10.1136/bmj.320.7245.1297
- Laboratories ACoPSfCPF. ATS statement: guidelines for the six-minute walk test. *Am J Respir Crit Care Med*. 2002;166:111–117. doi:10.1164/ajrccm.166.1.at1102
- Anon. Standardization of spirometry, 1994 update. American Thoracic society. *Am J Respir Crit Care Med*. 1995;152(3):1107–1136. doi:10.1164/ajrccm.152.3.7663792
- Haldar P, Pavord ID, Shaw DE, et al. Cluster analysis and clinical asthma phenotypes. *Am J Respir Crit Care Med*. 2008;178(3):218–224. doi:10.1164/rccm.200711-1754OC
- Vestbo J, Agusti A, Wouters EF, et al. Should we view chronic obstructive pulmonary disease differently after ECLIPSE? A clinical perspective from the study team. *Am J Respir Crit Care Med*. 2014;189(9):1022–1030. doi:10.1164/rccm.201311-2006PP
- Miravittles M. Diagnosis of asthma–COPD overlap: the five commandments. *Eur Respiratory Soc*. 2017. doi:10.1183/13993003.00506-2017
- Caillaud D, Chanez P, Escamilla R, et al. Asthma-COPD overlap syndrome (ACOS) vs ‘pure’ COPD: a distinct phenotype? *Allergy*. 2017;72(1):137–145. doi:10.1111/all.13004
- Yanagisawa S, Ichinose M. Definition and diagnosis of asthma-COPD overlap (ACO). *Allergol Int*. 2018;67(2):172–178. doi:10.1016/j.alit.2018.01.002
- Kauppi P, Kupiainen H, Lindqvist A, et al. Overlap syndrome of asthma and COPD predicts low quality of life. *J Asthma*. 2011;48(3):279–285. doi:10.3109/02770903.2011.555576
- Hardin M, Silverman EK, Barr RG, et al. The clinical features of the overlap between COPD and asthma. *Respir Res*. 2011;12:127. doi:10.1186/1465-9921-12-122



27. Menezes AMB, Montes de Oca M, Perez-Padilla R, et al. Increased risk of exacerbation and hospitalization in subjects with an overlap phenotype: COPD-asthma. *Chest*. 2014;145(2):297–304. doi:10.1378/chest.13-0622
28. Hardin M, Cho M, McDonald ML, et al. The clinical and genetic features of COPD-asthma overlap syndrome. *Eur Respir J*. 2014;44(2):341–350. doi:10.1183/09031936.00216013
29. Duong-Quy S, Tran Van H, Vo Thi Kim A, Pham Huy Q, Craig TJ. Clinical and functional characteristics of subjects with asthma, COPD, and asthma-COPD overlap: a multicentre study in Vietnam. *Can Respir J*. 2018;2018. doi:10.1155/2018/1732946
30. Sakae TM, Pizzichini MMM, Teixeira PJZ, Silva R, Trevisol DJ, Pizzichini E. Exacerbations of COPD and symptoms of gastroesophageal reflux: a systematic review and meta-analysis. *Jornal Brasileiro De Pneumologia*. 2013;39(3):259–271. doi:10.1590/S1806-37132013000300002
31. Terada K, Muro S, Sato S, et al. Impact of gastro-oesophageal reflux disease symptoms on COPD exacerbation. *Thorax*. 2008;63(11):951–955. doi:10.1136/thx.2007.092858
32. Lin YH, Tsai CL, Chien LN, Chiou HY, Jeng C. Newly diagnosed gastroesophageal reflux disease increased the risk of acute exacerbation of chronic obstructive pulmonary disease during the first year following diagnosis—a nationwide population-based cohort study. *Int J Clin Pract*. 2015;69(3):350–357. doi:10.1111/ijcp.12501
33. Kim J, Lee JH, Kim Y, et al. Association between chronic obstructive pulmonary disease and gastroesophageal reflux disease: a national cross-sectional cohort study. *BMC Pulm Med*. 2013;13(1):51. doi:10.1186/1471-2466-13-51
34. Ingebrigtsen TS, Marott JL, Vestbo J, Nordestgaard BG, Hallas J, Lange P. Gastro-esophageal reflux disease and exacerbations in chronic obstructive pulmonary disease. *Respirology*. 2015;20(1):101–107. doi:10.1111/resp.12420
35. Martinez CH, Okajima Y, Murray S, et al. Impact of self-reported gastroesophageal reflux disease in subjects from COPD Gene cohort. *Respir Res*. 2014;15(1):62. doi:10.1186/1465-9921-15-62
36. Casanova C, Baudet JS, del Valle Velasco M, et al. Increased gastro-oesophageal reflux disease in patients with severe COPD. *Eur Respir J*. 2004;23(6):841–845.
37. Terada K, Muro S, Ohara T, et al. Abnormal swallowing reflex and COPD exacerbations. *Chest*. 2010;137(2):326–332. doi:10.1378/chest.09-0482
38. Sasaki T, Nakayama K, Yasuda H, et al. A randomized, single-blind study of lansoprazole for the prevention of exacerbations of chronic obstructive pulmonary disease in older patients. *J Am Geriatr Soc*. 2009;57(8):1453–1457. doi:10.1111/j.1532-5415.2009.02349.x
39. Asthma Gf. Global strategy for asthma management and prevention, 2018 Available from: [www.ginasthma.org](http://www.ginasthma.org); 2018 Assessed January 2018.
40. Donaldson G, Seemungal T, Bhowmik A, Wedzicha J. Relationship between exacerbation frequency and lung function decline in chronic obstructive pulmonary disease. *Thorax*. 2002;57(10):847–852. doi:10.1136/thorax.57.10.847

## International Journal of Chronic Obstructive Pulmonary Disease

Dovepress

### Publish your work in this journal

The International Journal of COPD is an international, peer-reviewed journal of therapeutics and pharmacology focusing on concise rapid reporting of clinical studies and reviews in COPD. Special focus is given to the pathophysiological processes underlying the disease, intervention programs, patient focused education, and self management

protocols. This journal is indexed on PubMed Central, MedLine and CAS. The manuscript management system is completely online and includes a very quick and fair peer-review system, which is all easy to use. Visit <http://www.dovepress.com/testimonials.php> to read real quotes from published authors.

Submit your manuscript here: <https://www.dovepress.com/international-journal-of-chronic-obstructive-pulmonary-disease-journal>